



# CRYSTAL CROSSING

Crystal, MN  
For Lease



50 South 6th Street  
Suite 1418  
Minneapolis, MN  
612.332.6600  
[www.upland.com](http://www.upland.com)

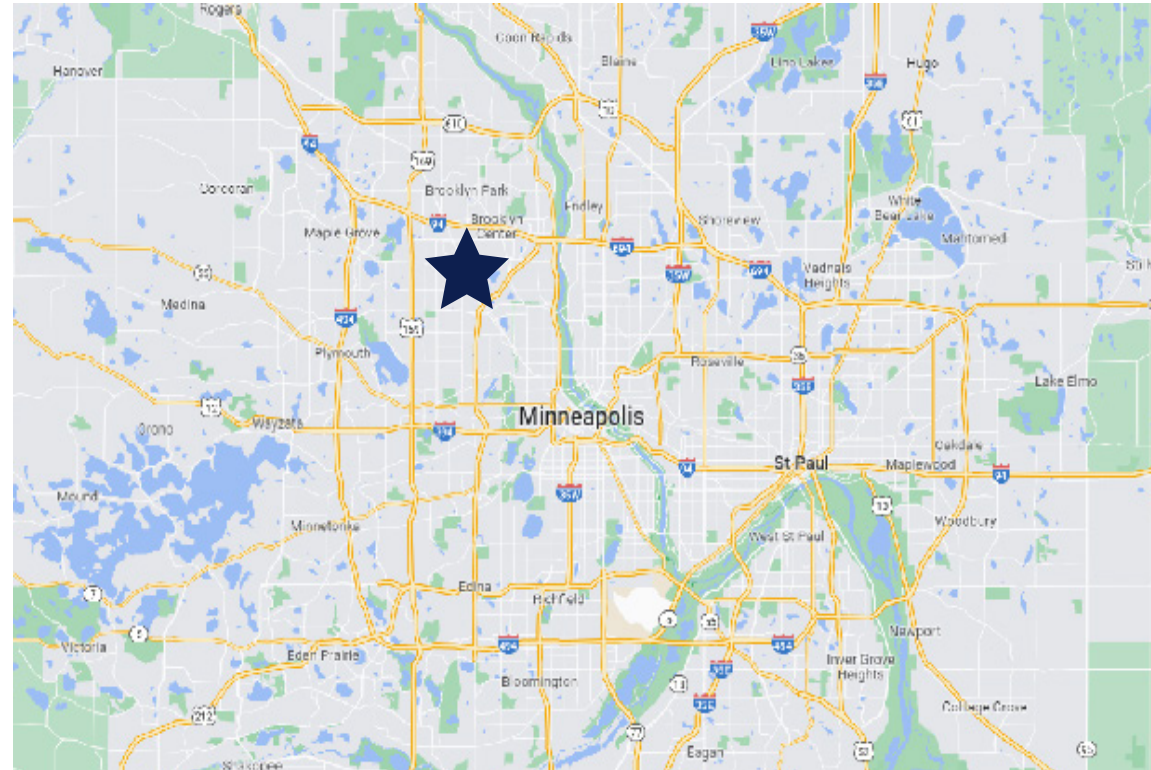
ZACH STENSLAND  
612.436.0745  
[ZACH@UPLAND.COM](mailto:ZACH@UPLAND.COM)

SAMUEL GERLACH  
612.465.8529  
[SAM@UPLAND.COM](mailto:SAM@UPLAND.COM)

*Look Upland. Where  
Properties & People Unite!*



<b>ADDRESS</b>	6200 - 6230 56th Ave N
<b>CITY, STATE</b>	Crystal, MN
<b>SPACE AVAILABLE</b>	~5,000 SF (Endcap)
<b>LEASE RATE</b>	Negotiable
<b>TAX 2022</b>	TBD
<b>YEAR BUILT</b>	1970
<b>COUNTY</b>	Hennepin
<b>PARKING</b>	Approx. 75 Surface Stalls

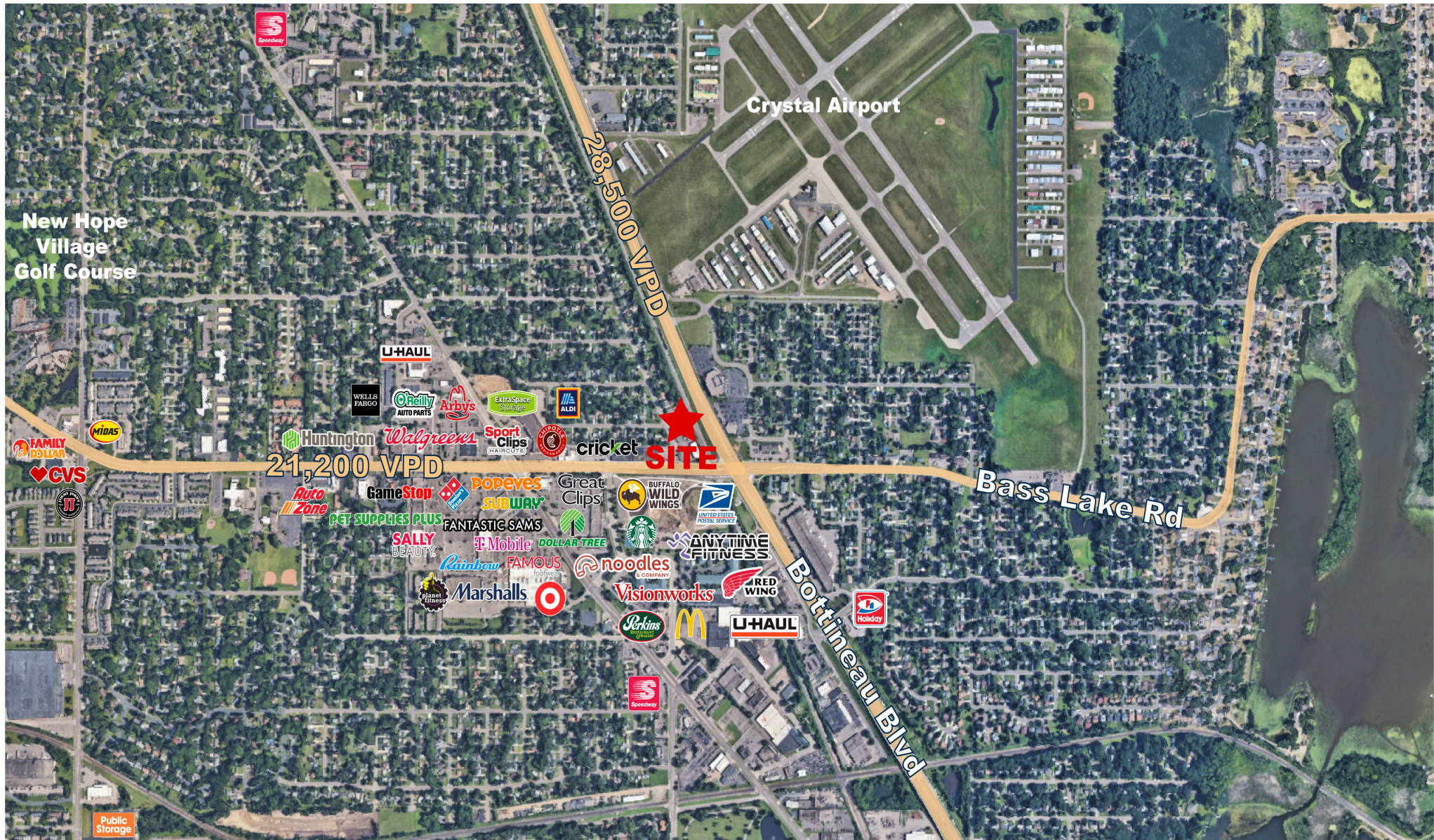


**HIGHLIGHTS:**

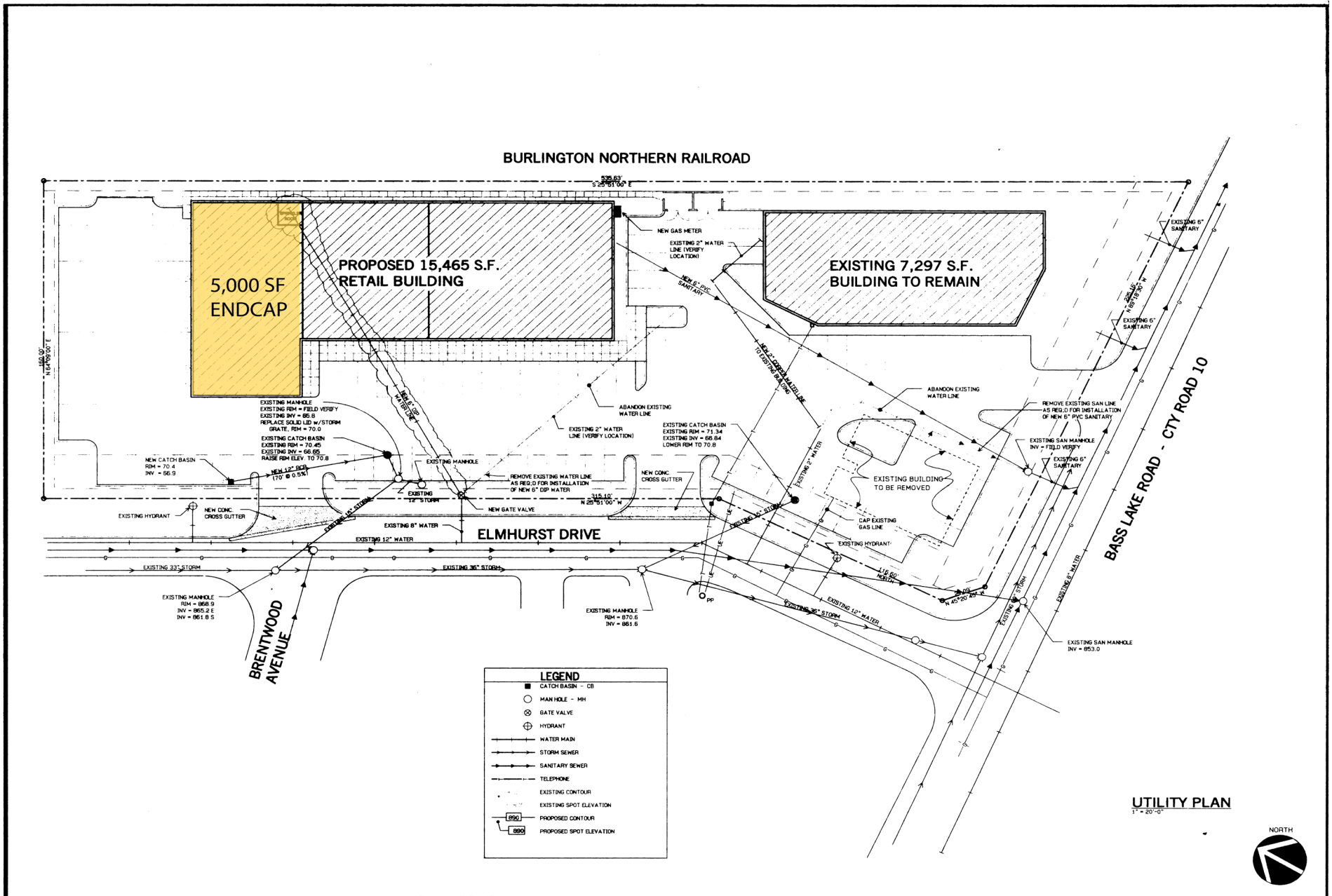
- Located on the North West corner of the most trafficked corner in the Crystal/New Hope area
- Highly active center with well-established day care and liquor store tenants
- Visible from Hwy 81 with almost 30,000 vehicles per day

	1-MILE RADIUS	3-MILE RADIUS	5-MILE RADIUS
<b>POPULATION</b>	11,968	111,726	278,759
<b>MEDIAN AGE</b>	39.1	37.2	36.9
<b>MEDIAN HH INCOME</b>	\$62,174	\$63,978	\$69,780
<b>AVERAGE HH INCOME</b>	\$76,378	\$79,472	\$89,543

















# UPLAND

REAL ESTATE GROUP, INC.

50 South 6th Street  
Suite 1418  
Minneapolis, MN  
612.332.6600

ZACH STENSLAND  
612.436.0745  
ZACH@UPLAND.COM

SAMUEL GERLACH  
612.465.8529  
SAM@UPLAND.COM

THIS INFORMATION HAS BEEN SECURED FROM SOURCES WE BELIEVE TO BE RELIABLE, BUT WE MAKE NO REPRESENTATIONS OR WARRANTIES, EXPRESSED OR IMPLIED, AS TO THE ACCURACY OF THE INFORMATION. REFERENCES TO SQUARE FOOTAGE OR AGE ARE APPROXIMATE. UPLAND HAS NOT REVIEWED OR VERIFIED THIS INFORMATION. BUYER MUST VERIFY THE INFORMATION AND BEARS ALL RISK FOR ANY INACCURACIES.